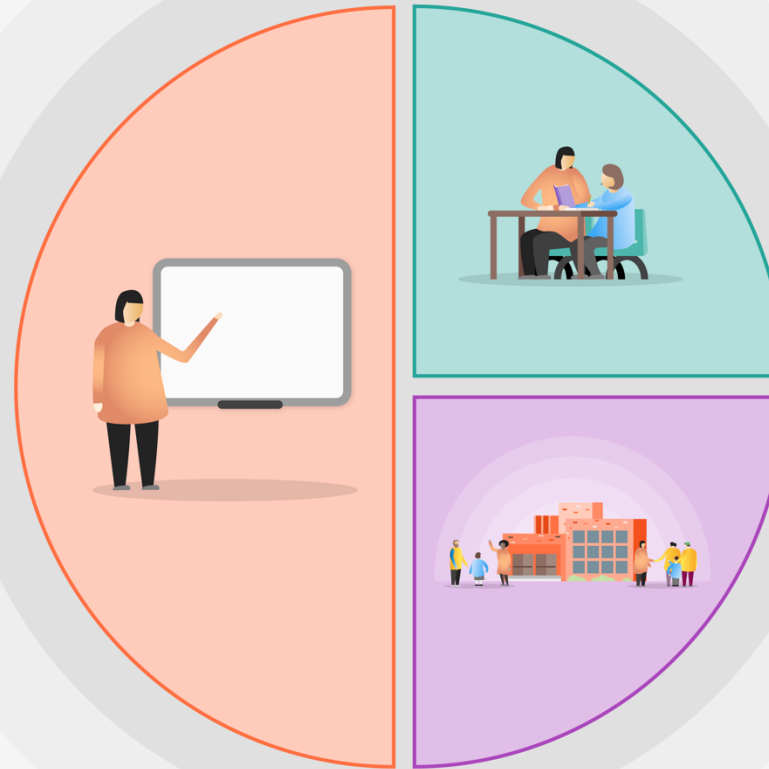


## 1 Teaching

- High Quality Teaching: Explicit instructions, modelling, scaffolding and immediate feedback with focus on metacognitive steps to complete a task
- Sustained use of interleaving, spaced practice and retrieval practice
- Prep to focus on independent practice and tasks to embed concepts
- High quality assessment to monitor progress, inform areas for development and inform teaching
- Support subject specific professional development
- CPD focussed on developing metacognition/SEN and the quality of teacher's modelling and explanation
- Provide regular CPD on effective teaching to sustain effective curriculum provision
- Implement a peer support model to help embed and sustain research-based strategies
- Implement a College Reading Strategy to provide effective support for students below expected reading age and further embed reading for curriculum enhancement



## 2 Targeted academic support

- Structured intervention plan: small group and 1:1 (Eng/maths tutoring)
- Effective deployment of Learning Leads for English and maths curriculum intervention
- Mentoring sessions focused on self-awareness, self-management, problem solving and social skills
- Collaboration with SEND dept to create bespoke learning packs

## 3 Wider strategies

- Sustaining parental engagement
- Support for Attendance Officer
- Support the College wellbeing centre for the most vulnerable
- Support effective CIAEG to raise careers awareness and support progression of disadvantaged students to Post 16 and beyond.
- Provide financial support with uniform and extra-curricular activities